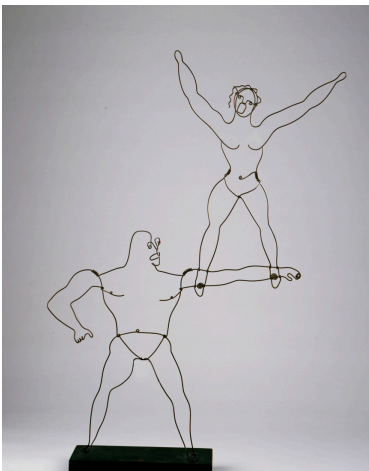


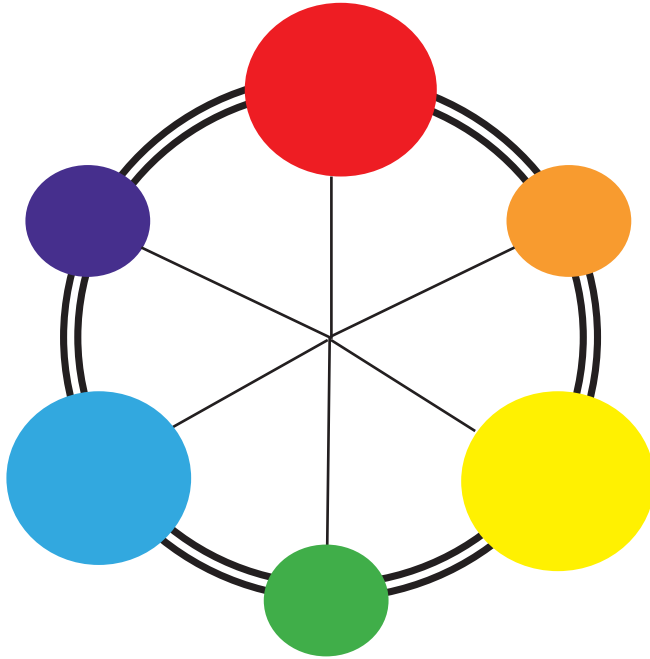
Honolulu Museum of Art

Elements of Art



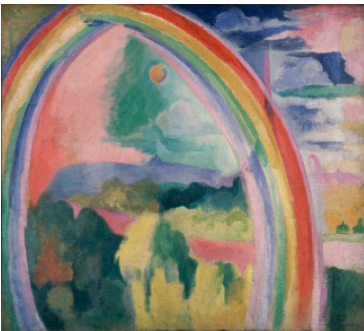
Student Tour Booklet

Colors

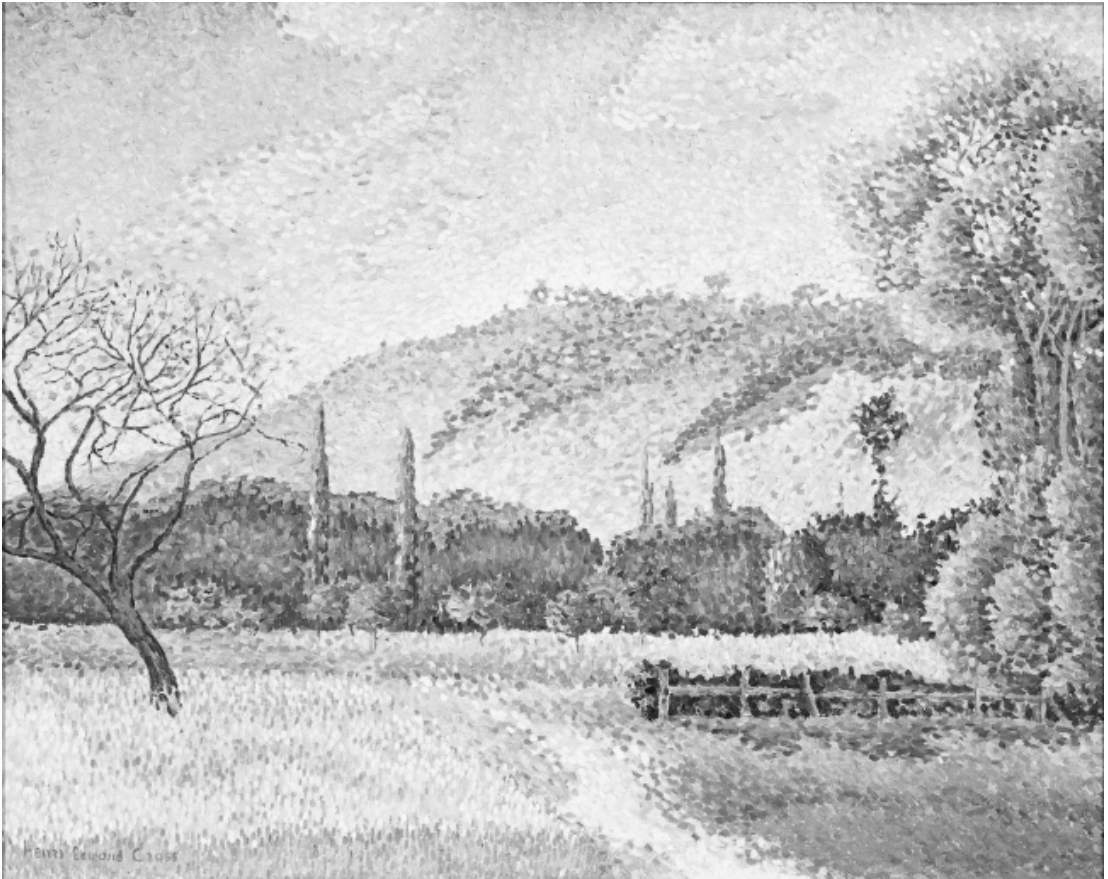


Let's review the colors on the color wheel. Can you name them?

Which are the primary, secondary, cool, and warm colors?



What are the colors of the rainbow in Robert Delauney's painting?



Remember the *Landscape* painting by Henri Cross that you saw at the museum?

In this booklet, the painting is only in black, white and gray.

Color the landscape using whatever colors you like!

Make it yours!

Lines

Draw different types of lines below.

Horizontal

Vertical

Diagonal

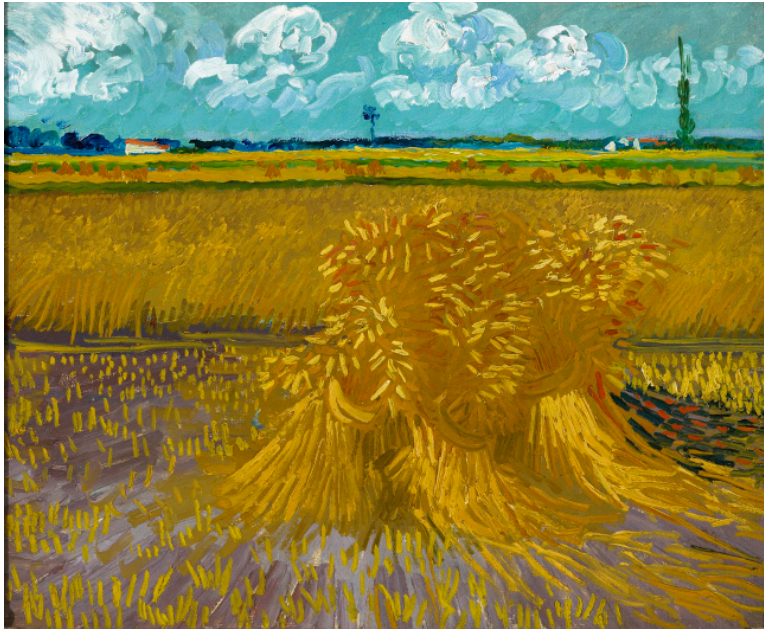
Wiggly

Zig Zag

Dotted

Curved

Parallel

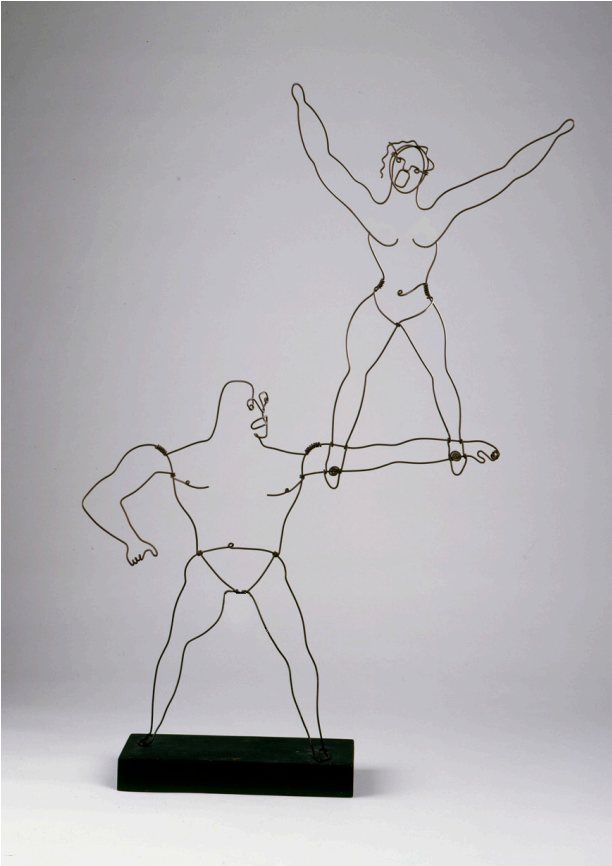


The artist Vincent Van Gogh painted *Wheat field* with many colorful lines.

Copy the lines in the wheat field painting in the box below using just a pencil.



Lines



Here are the *Acrobats* by Alexander Calder.

Draw a figure using only one line. Your figure doesn't have to be an acrobat; it can do anything you want.

Start on the dot and don't pick up
your pencil until you are finished.



Shapes

Draw the shapes below.

Circle

Square

Rectangle

Triangle

Organic shape

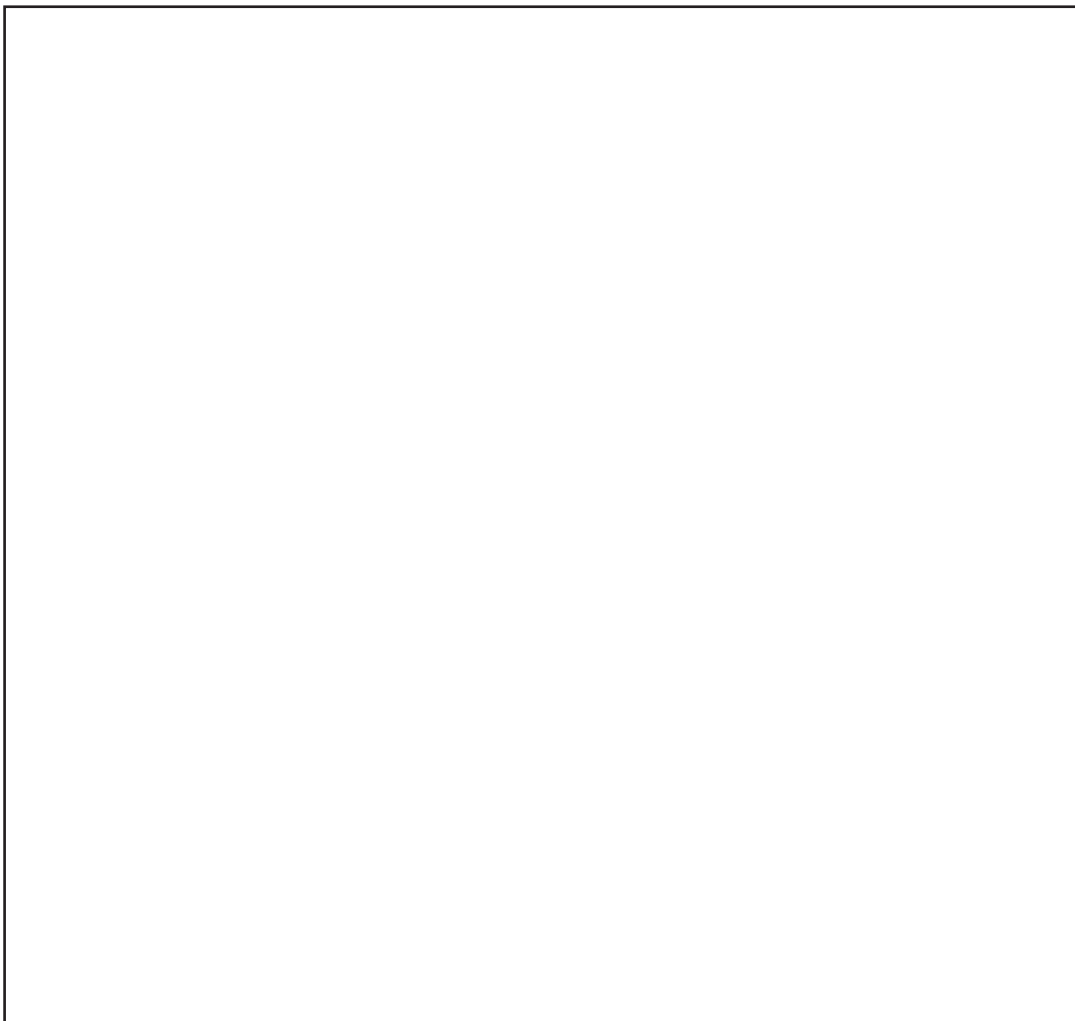
Oval



What shapes you see in this painting by Frederic Legere.

Use shapes to create a work of art in the box below.

Color each shape using colors you like. Will you use warm or cool colors?



Patterns

Patterns are a series of lines or shapes that repeat themselves.

Practice drawing patterns in the space below.

Design a frame for the Tondo painting using patterns.



Name _____

Teacher _____

School _____

Date _____

Come back and visit the museum again!

Honolulu Museum of Art

**900 South Beretania Street
Honolulu, Hawaii 96817**

